

March 2025

# HEDS

Issue No. 438

# The Running Grandpa!

The remarkable efforts of 'Sir' Kevin Sinfield just before Christmas have once again highlighted the devastating impact of Motor Neurone Disease (MND) on families. MND is a life-shortening illness for which there is currently no cure.

When MND affects our own Everton community, it becomes even more personal and immediate. Over the Christmas period, I decided to take on several challenges as #runninggrandpa to raise awareness and funds for MND.

To this end, I have:

- Participated in the 31 Miles in January Challenge organized by MNDA, covering 119 miles.
- Competed in the Rasselback Endurance Run at Sherwood Pines on January 11, completing 28 miles in just under 5½ hours.
- Entered the Leeds Marathon in May 2025 with support from Retford Athletic Club, followed by the Amsterdam Marathon in October, where I will be running with my youngest son, Matthew.
- Set a goal to run over 1000 miles during 2025; as of the time of writing, over 200 miles have been completed.

Every donation significantly impacts the lives of those living with MND. For instance:

- £10 provides an information pack for a newly diagnosed person with MND, helping them understand what to expect and how to access support.
- £28 funds an MND Connect helpline advisor for one hour.
- £85 funds software that allows someone with MND to bank their own voice so they can continue to speak with their own voice.

I am planning various sociable fundraising events throughout the year in the village. Please stay informed by following HEDS and the Everton Facebook page for dates and details on how you can support those affected by MND now and into the future.

If you would like to donate to support my journey and to aid MNDA in its fight against this disease, bringing us closer to finding a cure, you can donate by visiting my Just Giving page, #runninggrandparidesagain. Alternatively, Dave and Hannah at The Blacksmiths, as well as the team at The Yurt, have agreed to place MNDA collection boxes on their counters for any spare change.

**Tom Preece**







# Robotic Lawn

AUTOMATED LAWN CARE

07834 490977

roboticlawn@outlook.com

- Supplier & installer of Kress RTKn satellite guided robotic lawn mowers
- Contact Jim for a free quote and demonstration

**DEER PARK**  
COUNTRY STORE

In association with Deer Park Country Store  
[www.deerparkcountrystore.co.uk](http://www.deerparkcountrystore.co.uk)

**Kress** 

[www.kress.com](http://www.kress.com)

## For over 100 years and 5 generations...

W.E. Pinder & Son have been providing  
bespoke funeral services for local families.

For further details, telephone: **01302 710285**  
or visit our website: **[www.wepinder.com](http://www.wepinder.com)**



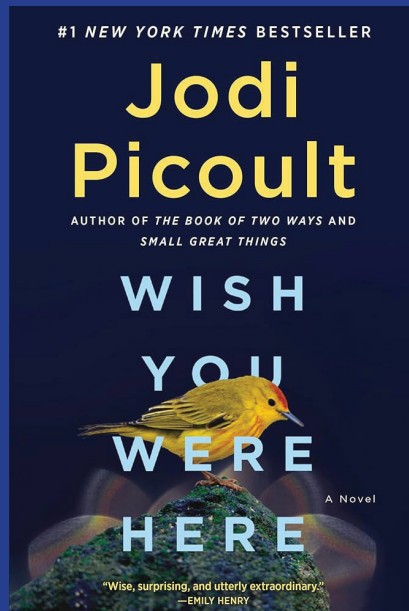
# Wish You Were Here

by Jodi Picoult

Diana O'Toole works in the world of art sales while her boyfriend, Finn, is a surgeon at a New York City hospital. The two have planned a two week vacation in the Galapagos Islands in March of 2022. When the Covid 19 pandemic breaks out, Finn encourages Diana to go on her own. Diana does, but soon after arriving she finds that her luggage has been lost, and the island has shut down for the next two weeks, leaving her without a place to stay. Luckily, a kind old woman who introduces herself simply as Abuela offers Diana a place to stay. Her son, Gabriel, is initially not pleased but he warms to Diana, as does his troubled teenage daughter, Beatriz.

As two weeks extends to an indefinite amount of time, Diana spends her time hanging out with Beatriz, touring the island with Gabriel, and being fed by Abuela. With an unreliable Wi-Fi signal, Diana's only communication with the outside world are the postcards she writes home to Finn, and flood of emails that occasionally come through her phone from him. Finn's emails depict a nightmarish scene at the hospital of a disease they don't understand. Diana grows to build a life on the island, and the solid, meticulously planned life that she imagined with Finn begins to waver. And when she is suddenly whisked back to reality, Diana finds herself longing for her island life.

**Val Ashton**



**NEEDHAM  
AND PIKE**  
Your LOCAL decorators

Interior and Exterior  
Over 25 years experience  
Free estimates

Phone: **01302 714151**  
or **01302 844813**





**CQC Registered Provider**

- ♥ Personal care
- ♥ Home & domestic help
- ♥ Respite care
- ♥ Long term conditions
- ♥ LA & Privately funded clients
- ♥ Free assessment & support to transfer from existing providers

**Based in Harwell, serving the local community**

**CONTACT US**

John - 07732 595163 or  
Hannah - 07845 510169  
[www.pinnaclecareprofessionals.co.uk](http://www.pinnaclecareprofessionals.co.uk)







# N.P.S. CONTAINER STORAGE SERVICES



• Air and water tight • Suitable for furniture • General goods

**£85.00 per month NO VAT!**

**24 hours access | 7 days a week**

**Croft Farm, Everton**  
**07979 735987**



## EVERTON Primary School

"Everton Primary is a supportive learning environment. The teachers really care about the children's well-being." Parent View. Ofsted 2023

"Pupils and staff get on well at this school. Relationships are consistently positive." Ofsted 2023

Our EYFS children have looked at some different animal 'poo' after focusing on the book: 'What do they do with all that poo?'. Miss Oakley then created 'poo' examples using chocolate for the children to guess which 'poo' came from which animal...they then tasted the 'poo'! The children have also learned about Tu B'Shevat, a Jewish New Year for trees and tasted the fruits provided by different types of trees. They have definitely been well fed in the last month!

The children in Class 1 have focused on Amelia Earhart and used role play to be eyewitnesses. They explored how historical sources help us understand about the past and then followed this up by exploring other historical role models, including the 1969 Moon Landing and Neil Armstrong.

Our children in Class 2 had a fantastic time at the Bassetlaw Museum focusing on the Romans. They created their own roman vases using clay, took part in an archaeology workshop and took part in marching drills and the turtle formation as Roman soldiers.

Class 3 children have enjoyed exploring different sources of evidence – including the primary source of Mrs Lewins' dad – to learn more about coal mining. The children have specifically focused on the Cadeby Colliery mining Disaster and the legacy of it. Whilst in Computing, the children have learned how to decipher between real and fake images, particularly enjoying creating their own fake images.

We still have tickets available for our first ever 'Bonkers Bingo' event on Friday 7th March 2025 at Everton Village Hall. This event is for adults only, but it is available to both our parents and local community. There'll be music, dancing and some

great prizes to be won! Tickets are on sale at £20 each, which will include your bingo book and a pie and peas supper. You are welcome to 'bring your own booze', but to support the school you can purchase a special edition 'Bonkers Bingo' glass for just £5 to drink out of at the event. Doors open at 6:30pm, and eyes are down 7pm. Please contact Everton Primary School office on 01777817350, [office@everton.notts.sch.uk](mailto:office@everton.notts.sch.uk) or pop into school to secure your tickets.

A reminder that this academic year we are offering private music sessions for babies, toddlers and children under the age of 5 years on a Wednesday morning in school from 10-11am courtesy of 'Jack in the Box Musical Memories'. Please contact Elaine on 07717758458 or email: [bielbyelaine@gmail.com](mailto:bielbyelaine@gmail.com) for more details.

**Andrew Green**  
Headteacher

## Knitting Group

The Knitting Group meets in the Village Hall on the 1st and 3rd Tuesday of the month from 10.30-12.30. All are welcome.

Contact Angela Harrison  
077840 56808



[www.hardlandscapingfencing.co.uk](http://www.hardlandscapingfencing.co.uk)



**Here at Hard Landscaping & Fencing  
we specialise in bringing your  
outdoor living space to life.**

- PATIOS • BLOCK PAVING • GRAVEL GARDENS
- TURFING • DRIVEWAYS • FENCING/GATES
- TIDY UPS • HEDGE CUTTING • PAGODAS
- RAISED SLEEPER BEDS • WALLING



**HARD LANDSCAPING & FENCING**

Contact Andrew for a  
**FREE** quote today on  
**07703 294 471**  
andylawrence71@yahoo.co.uk

Working throughout North Lincolnshire,  
South Yorkshire and North Notts

# Mobile Library visits to Everton 2025

Friday	March 21st
Friday	May 16th
Friday	June 13th
Friday	July 11th
Friday	August 8th
Friday	September 5th
Friday	October 10th
Friday	October 31st
Friday	November 28th
Friday	January 23rd 2026

Everton - Windy Ridge/Roe Lane

Arrive 14:40. Depart. 14:50

Everton - Mount Prospect.

Arrive 14:55. Depart. 15:10



**CLEANER SWEEPS**  
Chimney sweep

NO HIDDEN FEES

- CCTV INSPECTION
- REPAIRS
- NO MESS
- FULLY INSURED MEMBER
- COMPLIANCE CERTIFICATE ISSUED FOR PROPERTY INSURANCE REQUIREMENTS

**CALL PETE- 07583217834**  
[www.cleanersweeps.com](http://www.cleanersweeps.com)  
f CLEANER SWEEPS



## EVERTON MUSIC SOCIETY

Meeting **FRIDAY 21<sup>st</sup> MARCH**

An Evening of your all time Favourite Music

\* Playlist courtesy of You the Audience \*

**EVERTON VILLAGE HALL 19:30 TO 21:30**

**Bring along your list of top all time favourite pieces  
of music of whatever kind  
If we can find it, we will play it!**

**£3 Entry fee at the door**

**Tea and Coffee available**

**You are welcome to bring your own alcoholic drinks (age restriction applies) and nibbles**



# Professional Heating Engineers

specialising in Gas/Oil & LPG Boiler Installation, Repairs,  
Servicing & Annual Maintenance Contracts

## Boiler Installation



New Gas/Oil & LPG Boiler  
Installation

## Boiler Repairs



Emergency Callouts  
Gas/Oil & LPG Boiler  
Repairs & Servicing



To book a service or arrange an engineer visit...

**T: 01427 810145**

**M: 07846 708 730**

Email: [info@heatech-ltd.com](mailto:info@heatech-ltd.com)



[www.heatech-ltd.com](http://www.heatech-ltd.com)



**We can help you declutter  
your home and life**

- Trained by Dilly Carter
- DBS checked and fully insured
- Experience of working on 'Sort Your Life Out' TV programme

Contact us on 07977 420375 or [kirsten@thomasandlee.co.uk](mailto:kirsten@thomasandlee.co.uk)  
for an initial consultation and more information

# Yellow-Legged Asian Hornet

You may have heard about the Yellow-Legged Asian Hornet (YLAH), there's even been a mention of it on the Archers! Well, you are probably wondering what all the fuss is about. Afterall, don't we already have hornets in this country? Yes, we have the European hornet, but *Vespa velutina* is an invasive species, with an appetite for our native insects! A single colony can devour 11 kg of insects including, butterflies, hoverflies, bees and other beneficial pollinators.

Accidentally introduced to France in 2004 in a consignment of pottery from China, the yellow-legged hornet is now established in many European countries. The first YLAH was discovered in the UK in 2016.

In 2024 there were 24 nests found in the UK. So far, the sightings have mainly been in and around Kent. Where they have appeared further north, they have travelled in on plants or through our ports on transport.

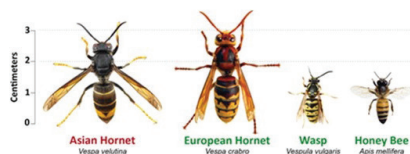
It may seem a shame to kill these resourceful creatures, and in the long-term we may have to live with them, but our invertebrate population, as widely reported, is struggling (58% reduction in flying insects) and our honey bees will be predated causing further losses as evidenced by French beekeepers.

Currently, any queens will be hibernating in the same way as our wasps. The warmer weather will allow these to emerge and begin the reproductive cycle. Queens build a small nest to create a workforce which will build a much larger nest. In the summer the hornets will catch insects to feed their young. New queens are produced in the autumn to complete the cycle – up to 350 queens can be produced although a much small number will mate and survive into the following year. The strategy is to prevent the

YLAH from becoming established in the UK to protect our native biodiversity – we need help to do this.

If you think you have seen an YLAH, photograph it (if possible) and report it by using the free App; fill in the online form on the website of the UK Centre for Ecology and Hydrology or email: [alertnonnative@ceh.ac.uk](mailto:alertnonnative@ceh.ac.uk). Public awareness is the key to their control: They are smaller and darker than our native hornet and have distinctive yellow legs.

**Think you've seen an Asian Hornet? Report it!**



Report through the Asian Hornet Watch app or [www.bit.ly/asianhornetreport](http://www.bit.ly/asianhornetreport)



## LAWNWOOD FARM SHOP

LOCAL  
**FREE RANGE EGGS  
POTATOES  
AND VEGETABLES**

**07745 533 216**

**Harwell, Everton,  
DN10 5BU**



**CLIFFORD**  
Heating Limited



**Your Home Heating Specialist**



- AGA & RAYBURN Range Cooker Specialist.
- Oil, Gas and Solid Fuel heating engineers.
- Fully fitted central heating systems.
- Boiler breakdown experts.
- Reconditioned AGA's inc. 13 amp electric.
- Monthly service plans from as little as £12 per month

**T. 01777 872391**  
Online at [www.cliffordheating.co.uk](http://www.cliffordheating.co.uk)

AGA  HETAS  RAYBURN

## CHALLENGE

### CARPET AND UPHOLSTERY CLEANERS

Lounge 12ft x 15ft - **£50**  
 3 piece suite - **£59**  
 Hall/Stairs/Landing - **£50**  
 2 bed property - **£99**

Fully insured  
 All work satisfaction guaranteed  
**Min order - £50**  
*Rugs a speciality*

Freephone **0800 3287941**  
 Mobile **07973 861973**



# TONY'S TOPICS

## NO TAXATION WITHOUT REPRESENTATION

Two hundred and fifty years ago the Battle of Lexington and Concord marked the start of the American War of Independence. The once amicable relations with the colonists of the New World had decisively ended. Soured by 20 years of increased control from the Mother Country, and 10 years of additional and unfair taxation nerves were frayed. Mixed together it created the perfect conditions for revolution. (sound familiar).

In the period 1764 to 1772 several hefty taxes were imposed on the 13 colonies.



A stamp tax was introduced on paper transactions. In addition, imports of sugar, molasses, wine, glass, paint and last but not least, tea was heavily taxed.

The Boston Tea Party, 16 December 1773, is often viewed as the final act of rebellion prior to the outbreak of hostilities. The "Party" itself was a fairly peaceful affair. Small rowing boats full of colonists dressed as Red Indians, boarded 3 ocean going British cargo ships at anchor in Boston Harbour. During the revelries 342 chests of tea were thrown into the water. It was hoped that it would

be seen as a peaceful act of defiance against the tax. The levy was set at 3d (pence) per pound weight of tea (30p at today's value).

The rest, as they say, is history. After the war, the victors declared independence on 4 July 1776.

The aim of this short historical story is to draw some opinions or pub talk.

Current American financial prospects look bright. The size of Government is reducing. There is no VAT in the USA and sales tax is 2.9% to 7.25%, set at State level.

Both countries have new Governments, though clearly of differing ambitions.

Whose prospects are brighter? Which country is likely to impose unpopular taxes? Which country has, or is likely to cancel elections?

So, where would you prefer to live?

## OIL ORDERING

The final 3 dates for oil orderind, Winter season 2025, are

4 March

1 April

1 May

**Tony**



# MOORE GAS LTD

DOMESTIC & COMMERCIAL INSTALLATIONS,  
SERVICE & REPAIR



**10 year guarantee on Worcester Bosch Boilers  
with flexible finance available**



## FEATURED SERVICES:

- Gas Boilers • Oil Boilers
- LPG Boilers • Stoves
- Powerflushing
- Landlord Safety Certificates

**01427 881 175 | 07725 009 741**

[mooregasltd@yahoo.com](mailto:mooregasltd@yahoo.com)

[www.mooregasltd.com](http://www.mooregasltd.com)



- Heating Services • Boiler Services • Log Burner
- Competitive Pricing • Central Heating • Underfloor Heating

# Parish Council

## **Parish Council and Village Website:**

**<https://evertonparishcouncil.uk>**

Please visit our website for latest information and village news.

## ***New Parish Councillors***

The Parish Council is pleased to welcome Councillor Gaynor Waddington as our newest member. She joins us just one month after Councillor Gary Thomson's co-option, completing our council and bringing our membership to its full complement of nine.

## ***Bassetlaw Mobile Community Shop***

The Everton Mobile Shop calls every Thursday between 12:15 and 13:15 and is located on the Metcalfe playing field car park. The shop is open to everyone.

## ***Footpaths and byways***

We kindly remind landowners with hedges, trees, or vegetation alongside public rights of way of their responsibility to ensure that these do not overhang or obstruct the paths. Keeping our network of footpaths clear and accessible is a legal requirement and helps ensure everyone can continue to enjoy the beauty of our shared spaces. Your cooperation is greatly appreciated.

## ***Friends of Everton Cemetery***

Friends of Everton Cemetery assist the parish council in maintaining the cemetery on Mattersey Road, organising tidy-up sessions, installing signs and carrying out minor repairs. The group also undertake periodic visual safety inspections and arrange for work to be carried out by the contractor. This informal group warmly welcomes new members, and no specific skills are required. If you are interested in joining and helping make a significant difference to our cemetery's upkeep, please contact the parish clerk.

## ***STEP Fusion Energy***

The STEP prototype fusion energy plant has a home at the West Burton site. If you'd like to find out more about fusion energy, please visit [www.step.ukaea.uk](http://www.step.ukaea.uk)

## ***District Councillor's Surgery***

District Councillor Steven Pashley is now running a surgery. The surgeries are to take place on the 3rd Thursday in the month, between 10-12 at Misson Village Hall (drop-in)

## ***Useful Contact Details***

### **Speeding Issues/Inconsiderate Parking**

These can be reported to the Police on Telephone number 101

**Highways Issues** (for example potholes, road defects, overgrown hedges, damaged signs/overgrown public footpaths).

These can be reported Nottinghamshire County Council via their website [www.nottinghamshire.gov.uk](http://www.nottinghamshire.gov.uk) or by using the 'MyNotts' App. Or by contacting your County Councillor Tracey Taylor [Cllr.tracey.taylor@nottsc.gov.uk](mailto:Cllr.tracey.taylor@nottsc.gov.uk)

**Environmental, planning and planning enforcement issues** can be reported via the Bassetlaw District Council website [www.bassetlaw.gov.uk](http://www.bassetlaw.gov.uk) or by contacting your District Council, Steven Pashley Email [steven.pashley@cldr.bassetlaw.gov.uk](mailto:steven.pashley@cldr.bassetlaw.gov.uk)

### **Upcoming Parish Council Meeting Dates**

Monday 3rd March 2025

Monday 7th April 2025

Contact Details for the Clerk, Callum Bryant:

Email: [theclerk@evertonparishcouncil.uk](mailto:theclerk@evertonparishcouncil.uk)

Tel: 07362 287146

Parish Council documents including minutes, agendas and other local information can be found on the Parish Council's website:

<https://evertonparishcouncil.uk>

Parish Council meetings are normally held in the village hall and usually start at 7.15pm. Members of the public are always welcome to attend. Meetings normally take place on the first Monday in the month except when there is a bank holiday when the date will be scheduled as soon as possible after that date.



# Mothering Sunday

30TH MARCH

BOOKINGS  
NOW BEING  
TAKEN.





## An annual general meeting and a special open meeting

Our February meeting was our AGM when we review what we had done during the past year and elect our new Committee and President. The existing members of the Committee are delighted to welcome Caroline Lamb and Rosa Wright onto the Committee.


We reviewed what we had done during 2024/25 and our talks were varied and interesting. , Drumming, an exercise evening, well being, bowls, fashion show, quiz and making Christmas decorations were some of our meetings. We also heard Bev talk about the threat to our bees, a sobering meeting. Our meetings are always interesting and friendly and we also

looked at how the WI members are involved in the village, the Coffee mornings which have led to money being raised for various charities, the knitting group which has knitted over 360 squares for blankets for children in South Africa, involvement in the Arts & Craft weekend raising funds towards the repair of the Church bell tower, cleaning the Church, Sue Hughes has archived all Alan Berry's work which is now available to the village and led the project for the Lost Garden and we were responsible some years ago for initiating the provision of the Defribulator at the Village Hall. This reflects what a great WI we are.

Our March meeting, which is our 76th birthday party, is an open meeting to which everyone is invited. We have a very special speaker in Paul Whittaker, the deaf pianist, who is a fascinating speaker and musician. So do come along. There is a charge for non members of £5.00 to include delicious refreshments – we look forward to welcoming you all. ANN 818993

### CHIMNEY TROUBLES CURED BY THOSE CHIMNEY CHAPS

- Chimney Lining Services
- Chimney rebuilds & restoration
- Multi fuel stoves supplied & fitted
- Inglenooks created



**CHIMNEY LINING SYSTEMS**  
**thermocrete**<sup>®</sup>

**HELPLINE: 01777872391**

[www.cliffordheating.co.uk](http://www.cliffordheating.co.uk)

### LITTLE LAMBS EVERTON

Previously Cheeky Monkeys



*Toddler group*

*All members are DBS checked*

**EVERY FRIDAY FROM 09:00 - 11:00  
IN THE VILLAGE HALL EVERTON**

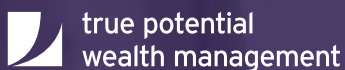
**ALL PARENTS / CARERS & TODDLERS ARE  
WELCOME TO LITTLE LAMBS.  
RELAX IN A SAFE ENVIRONMENT FOR FUN,  
FOOD, FRIENDSHIP & REFRESHMENTS.**

HOSTED BY THE RIVER IDLE  
BENEFICE OF CHURCHES



*River Idle Churches*  
SANTON, HASTONFIELD, HUSON,  
EVERTON & HATFIELD

for more info contact tony on 07496862985 or  
[tony.childrenandfamily@gmail.com](mailto:tony.childrenandfamily@gmail.com)



## Financial Advice to help reach your goals.

We all have unique goals in life that we would like to achieve, whether it is retiring early, growing your wealth, or giving something to the next generation. Your financial goals are personal to you and your financial plan should be too.

I can build a bespoke financial plan that aims to help you reach your long-term goals in a way that suits your lifestyle and personal circumstances.



Contact me to find out if financial advice is right for you.

### Steven Bell

Wealth Management Partner

5 Sunderland Street, Tickhill, South Yorkshire DN11 9PT

T 07429344428 E [stevenbell@truepotential.co.uk](mailto:stevenbell@truepotential.co.uk)

[www.truepotential.co.uk/steven-bell](http://www.truepotential.co.uk/steven-bell)

With investing, your capital is at risk. Investments can fluctuate in value and you may get back less than you invest. This material is not a personal recommendation or financial advice and the investments referred to may not be suitable for all investors.

True Potential Wealth Management LLP is authorised and regulated by the Financial Conduct Authority, FRN 529810. [www.fca.org.uk](http://www.fca.org.uk). Registered in England and Wales as a Limited Liability Partnership No. OC356611.



# GARDENING IN GUERNSEY AND EVERTON

For our February meeting, Everton Garden Holders were delighted to welcome Rohan Thorn as our speaker and what a fascinating talk it was. Rohan's father was plantsman who trained at Kew and created a huge garden on a hillside in Guernsey. When he died Rohan took over the garden which needed a lot of restoration. She did not have a lot of plant knowledge but quickly gained it as she spent up to 10 hours a day restoring the garden and adding her ideas to it. What an undertaking.

Rohan is now living in Everton and renovating the garden at her new house – all being done in the most ecological way. It was an enthralling evening and we all look forward to seeing her latest project. Thank you Rohan.

We are joined at our March meeting by Ellie with a talk on peatfree compost with samples to look at. There will be a time for questions - so come along and join us on Monday 10 March at 7.30 p.m in the Village Hall and have all your questions answered on what compost to use to get the best results this year for your plants

**Ann 818993**

## Village Coffee Morning

We have been asked to run two coffee mornings during the winter months on the 2nd and 4th Tuesdays of the month – so for March the following dates and times are TUESDAY 11th and TUESDAY 25th, 10.30 – noon in the Village Hall..

See you there. **Ann 818993**



## Long time since you played table tennis or snooker on full size table?

Why not give it a try at Everton village hall, Thursday evenings 7.30 to 9.00 pm..

Info available from Mick Boulby, "Northville", Church St. 817761.

## Wednesday Dance Classes

Everton village hall, 4.00 to 6.30 pm..

4:00-4:45pm - Mini + Junior Ballet and Tap

4:45-5:15pm - Mini + Junior Movers

5:15-6:00pm - Mini + Junior Acrobatics

## And finally.....

It is never too late to be what you might have been.

**George Eliot**

## April deadline

The April deadline will be the 15 March.

**Editorial Team**





**Join us for afternoon tea to celebrate VE Day 80th Anniversary!**

**Date:** Sunday May 11th, 2025

**Time:** 2:00 PM - 6:00 PM

**Location:** Everton Village Hall

Come dressed up in 1940s style and enjoy afternoon treats, displays, games and festivities! Bring your own drinks.  
Tickets will be on sale soon for Parish residents.

Don't miss out on this special occasion to take part, have a lot of fun and remember.



# March 2025

Weekly Meetings - All Village Hall unless otherwise notated

TUESDAY - CHOIR 8.00pm VH  
THURSDAY - TABLE TENNIS,  
SNOOKER, VH - 7.30pm  
- BASSETLAW MOBILE SHOP  
12.15PM - 1.15pm  
WEDNESDAY - DANCE CLASSES 4pm-6.30pm  
FRIDAY - LITTLE LAMBS  
9.30-11am term time - VH

**3rd** PARISH COUNCIL - 7.15pm VH  
**4th** KNITTING GROUP – 10.30am VH  
**5th** ASH WEDNESDAY 7.30pm. Holy  
Communion at St Nicholas, Bawtry  
OIL ORDERING DEADLINE  
**9th** HOLY TRINITY – 11.15am  
Holy Communion  
**10th** HOLY TRINITY – 9.00am  
Prayers for the Community –  
all welcome  
GARDEN HOLDERS – VH 7.30pm  
**11th** VILLAGE COFFEE, VH 10.30 - NOON  
**13th** VE DAY MEETING –  
Blacksmith's 7.30pm  
**15th** HEDS DEADLINE  
**17th** WI - see notice – 7.30pm VH  
**18th** KNITTING GROUP – 10.30am VH  
**21st** MUSIC SOCIETY MEETING  
7.30pm-9.30pm VH  
**24th** METCALFE RECREATION – 7.30 VH  
**25th** VILLAGE COFFEE, VH 10.30 - NOON  
**30th** 10.30am. Family Communion for  
Mothering Sunday St Nicholas, Bawtry

## April and on.....

Future Oil Ordering dates - 1 April  
11th May - VE Celebrations  
22nd June - Open Gardens and Craft  
Demonstrations

## HEDS Editorial Team

**Ann Hickman** - Editor  
ann@ityldu.co.uk 01777 818993

**Viv Preece** - Treasurer/Advertising  
hedstogether@gmail.com 01777 472396

**Adrian McGuigan** - Design and Production  
studio@mcguigandesign.co.uk 07858 207756

**Jean Winder** - Distribution 01777 817777

**Mike Harrison** 07732 956097

## HEDS Together Advertising Rates Inside Pages

Full Page £15.00 per month  
Half Page £ 8.00 per month  
1/4 Page £ 5.00 per month

### Front Cover

1/2 page £20.00 per month

(Front Cover advert limited to 2 months in any 12 month period)  
As at present, advertisers paying annually in advance will only pay for  
10 months advertising.

To advertise contact: **tel: 01777 818180**  
**hedstogether@gmail.com**

## Print quality of advertisements

Although we always try to ensure that our advertisements are well presented, unfortunately from time to time, some of our advertisements may be a little faint and lacking definition or clarity. This is because the printing process we have to use to produce HEDS Together works better where the original document is solely in black and white and with no background colouring.

It would greatly assist the editorial team if, when submitting advertisements for publication, advertisers are able to use black and white with limited use of background wherever possible.

May we thank you for continuing to support HEDS Together and should you need any assistance we will be only too pleased to help.

## The Editorial Team

## Disclaimer & Copyright

The views expressed within this newsletter DO NOT necessarily reflect the views of the Editorial Panel. We make every effort and take great care in the assembly and production of this newsletter. However, we accept no responsibility for matters or disputes arising as a result of errors, printing errors, stories, features or advertisements which appear in this publication. Submitted articles, pictures and advertisements are accepted on the understanding that the contents are true and accurate and that the contributor owns the copyright or has cleared the material for use and that HEDS Together has permission to publish all or part of that submitted material.